

**FORT COLLINS INTERAGENCY WILDFIRE DISPATCH
CENTER AND AVIATION SERVICE CENTER**

2007 ANNUAL REPORT



***ARAPAHO-ROOSEVELT NATIONAL FORESTS
AND PAWNEE NATIONAL GRASSLAND***

Prepared by: Irene C. Mora, Center Manager, Mark Nelson, Former Center Manager

COMBINED REPORT: Agency specific information may need to be extrapolated.

**FORT COLLINS INTERAGENCY WILDFIRE DISPATCH CENTER
AND AVIATION SERVICE CENTER
*2007 ANNUAL REPORT***

2007 FTC NARRATIVE/SUMMARY:

Initial Attack/Regional and National Support:

According to the weather summary below 2007 was nothing spectacular. Although the weather was on the warmer side we did not experience an increase with our wildland fires or in fire acres. It was an average fire year. We assisted with All Risk types of incidents, Search and Rescue operations, blizzard assistance, etc. Our overall workload was and is assisting with Regional and National incidents.

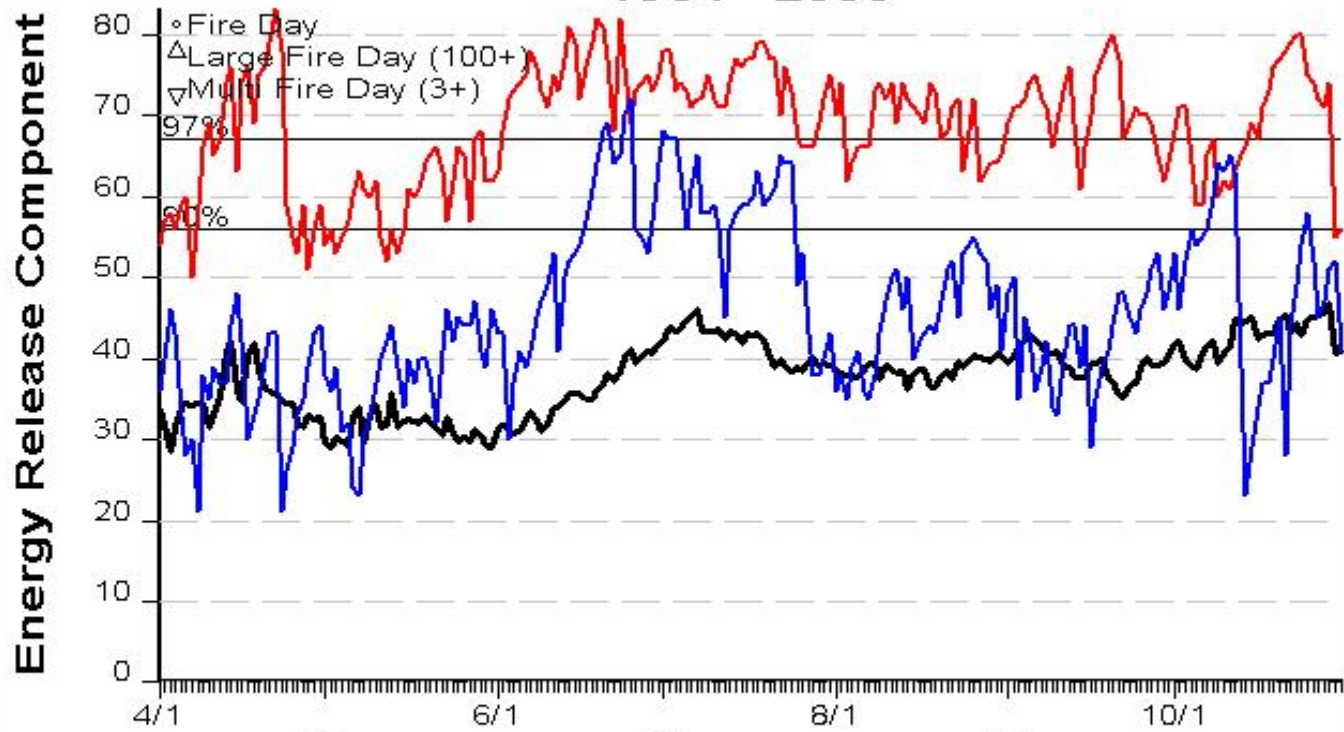
Weather:

2007 ended as nothing spectacular. None of the annual statistics made it into the top ten categories; warmest, coldest, wettest, driest, snowiest/or least snowiest. Temperatures extremes in 2007 ranged from minus 18 degrees in February to 100 degrees recorded in June and July. The average temperature for the year was slightly above normal. Precipitation for the year was 14 inches in some areas, which was 1.81 inches below the yearly normal. Snowfall for the calendar year which is January through December was 55.4 inches which is 6.3 inches below the 61.7 inch normal. Seasonal snowfall is measured from July 1st through June 30th. So far July through December was 26.4 inches has been tallied which is only 0.8 inch above the seasonal average for the first half of the 2007-2008 season.

2007 fire season representative ERC chart for the Estes Park weather station

Of the established April 15th through October 15th fire season (184 days); there were 44 days (24% of fire season) spent above the Very High fire danger rating and 10 days 5% of fire season) spent above the Extreme fire danger level. An average annual fire season would have 18 days (10%) at or above the Very High Fire Danger level and 5-6 days (3%) in the extreme fire danger level (See chart on next page).

050507-ESTES PARK 1964 - 2006



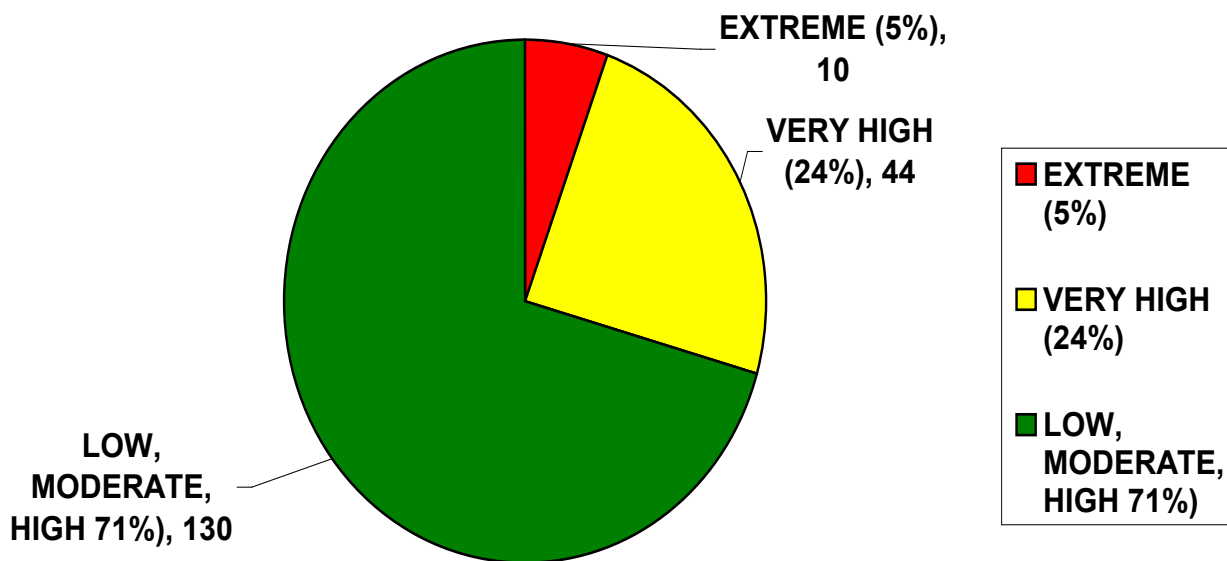
— Avg
— Max

— 2007 (0/0/0)

1 Day Periods

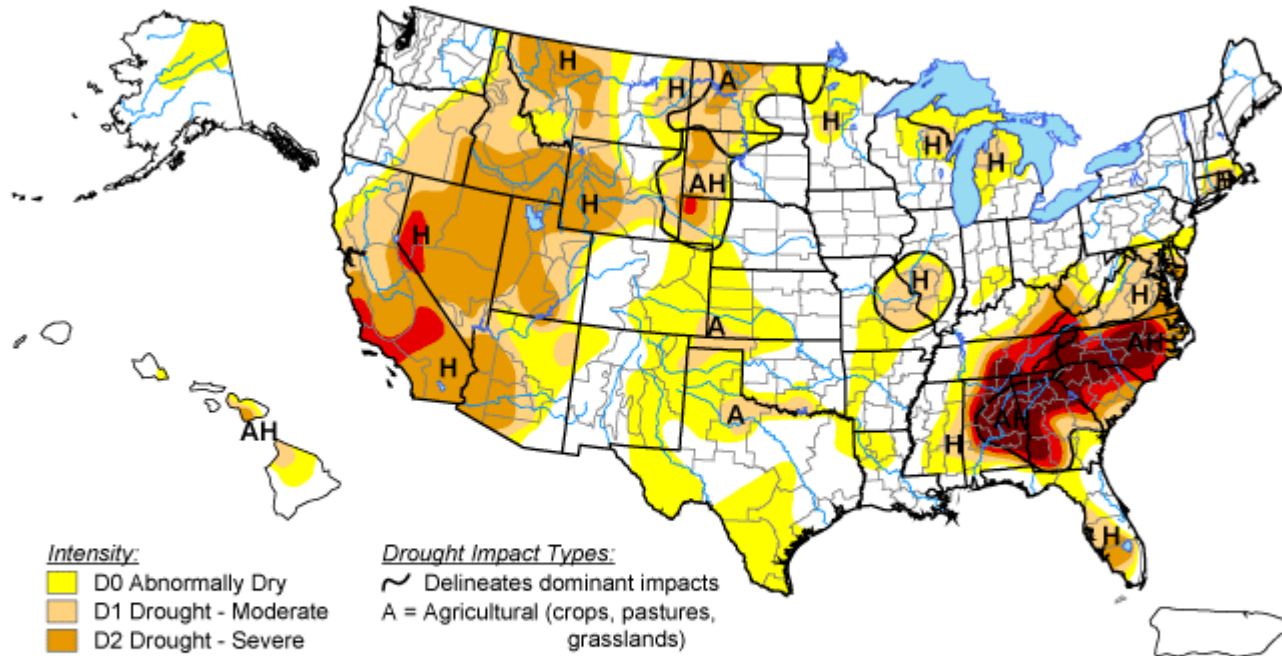
Model: 7G2PE2
7066 Wx Observations
FF+3.0.5 11/06/2007-09:26

2007 FIRE DANGER DAYS BY CLASS (Fire Season of April 15th-October 15th = 184 Days)



U.S. Drought Monitor

December 4, 2007
Valid 7 a.m. EST



- Intensity:**
- D0 Abnormally Dry
 - D1 Drought - Moderate
 - D2 Drought - Severe
 - D3 Drought - Extreme
 - D4 Drought - Exceptional

- Drought Impact Types:**
- ~ Delineates dominant impacts
 - A = Agricultural (crops, pastures, grasslands)
 - H = Hydrological (water)

The Drought Monitor focuses on broad-scale conditions. Local conditions may vary. See accompanying text summary for forecast statements.



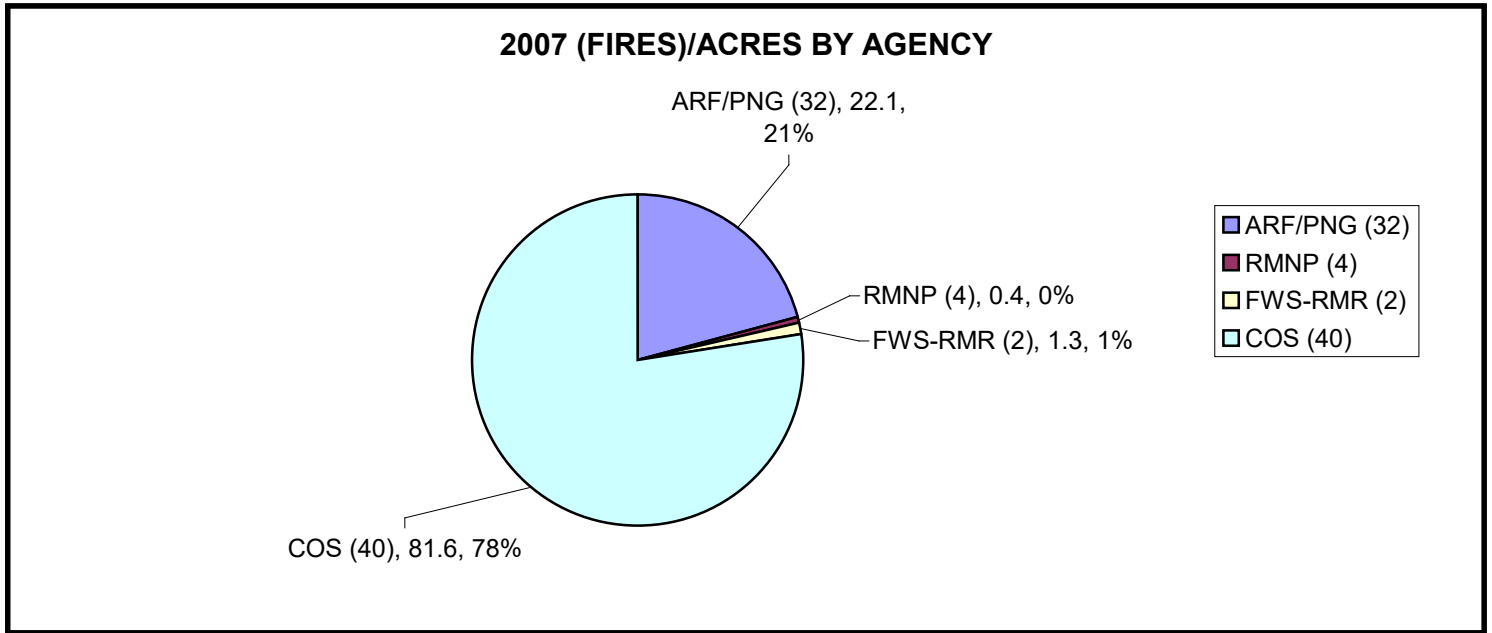
<http://drought.unl.edu/dm>

Released Thursday, December 6, 2007
Author: Brad Rippey, U.S. Department of Agriculture

The West: Stormy conditions hammered both the Southwest and Northwest. Heavy rain arrived in the Southwest on the last day of November. Daily-record rainfall totals for November 30 included 1.23 inches in Phoenix, Arizona, and 2.00 inches in Vista, California. The storm boosted the year-to-date rainfall in Phoenix from 2.73 to 4.01 inches. Elsewhere in Arizona, Mount Lemmon (near Tucson) netted 4.80 inches of rain in a 24-hour period on November 30 - December 1. In Blythe, California, where 1.04 inches fell on November 30, the storm accounted for more than one-quarter of the normal annual rainfall of 4.02 inches. Farther north, 25 inches of snow blanketed Brian Head, in southwestern Utah. Improvements of up to one drought category were fairly common across the Southwest. For example, severe drought (D2) replaced the large area of extreme drought (D3) previously covering southern California and western Arizona. Drought was also scaled back elsewhere in the Southwest, particularly in Arizona, western Colorado, and southern portions of Nevada and Utah.

2007 NORTHERN FRONT RANGE INTERAGENCY FIRE OCCURRENCE/ACRES:

The Northern Front Range Interagency Wildfire Cooperators experienced a total of 78 fires for a total of 105 acres burned. The Interagency breakdown of number of fires (in parentheses) and acres burned are shown in the following chart (does not include the state stats for agricultural/grass fires in Northeast Colorado counties). The stats reported in this document are only for fires that received an FTC incident number or impacted resource allocation within a county that has a County Annual Operating Plan. State and private statistics are available from the Colorado State Forest Service.

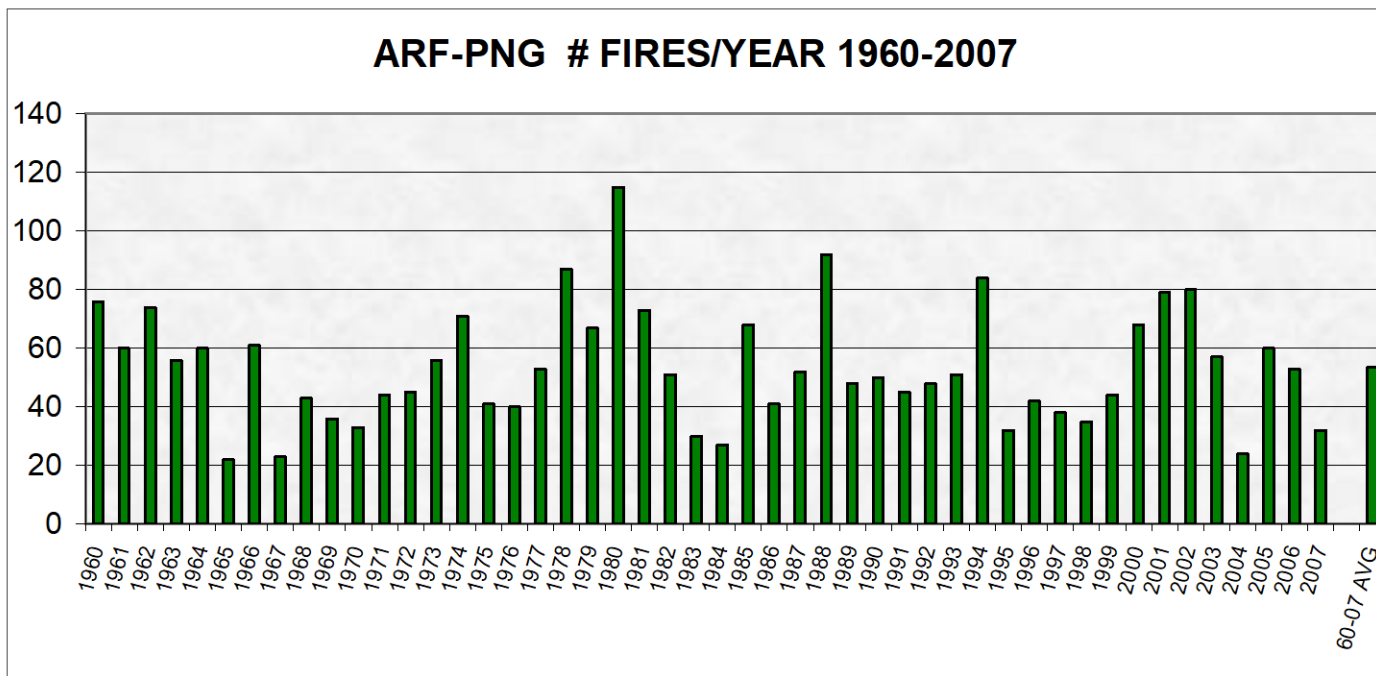


COS Includes: Larimer (LRX), Boulder (BLX), Gilpin (GPX) and Clear Creek (CCX) Counties

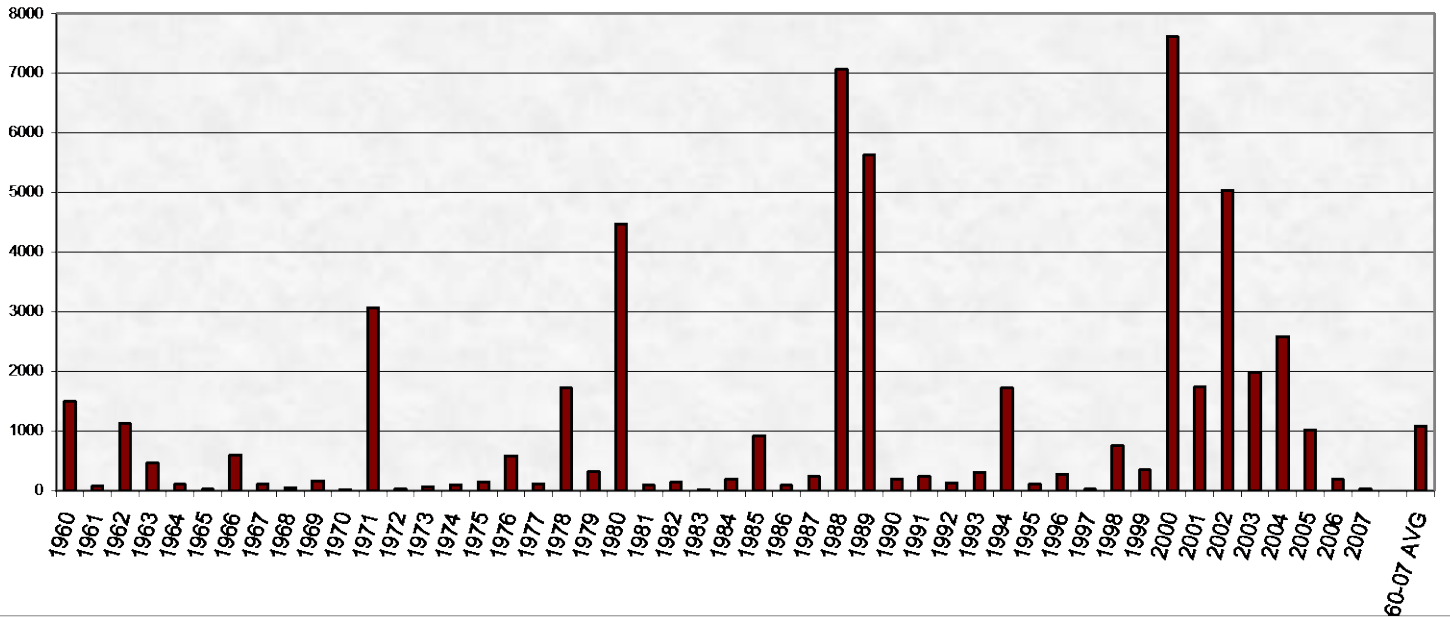
2007 ARAPAHO-ROOSEVELT N.F./PAWNEE N.G. FIRE OCCURANCE/ACRES:

The Arapaho-Roosevelt National Forests and Pawnee National Grassland experienced 32 fires for a total of 22 acres burned (USFS acres only). Of the 32 fires, 13 fires (41%) were human-caused for 5 acres. 19 fires (59%) were lightning-caused for 17 acres. The following bar graphs show the fire occurrence and acres burned from 1960 thru 2007 for the Arapaho-Roosevelt National Forests and Pawnee National Grassland. Historical records for the interagency cooperators are not available.

- The 48-year historical average annual fire occurrence and acres burned is: 54 fires for 1,116 acres/year.
- The five-year average annual is: 45 fires for 1162 acres per year.
- The ten-year average annual is: 53 fires for 2,132 acres per year burned.
- There have been a total of 2,535 fires for 53,563 acres burned from 1960 through 2007 (48 Years).

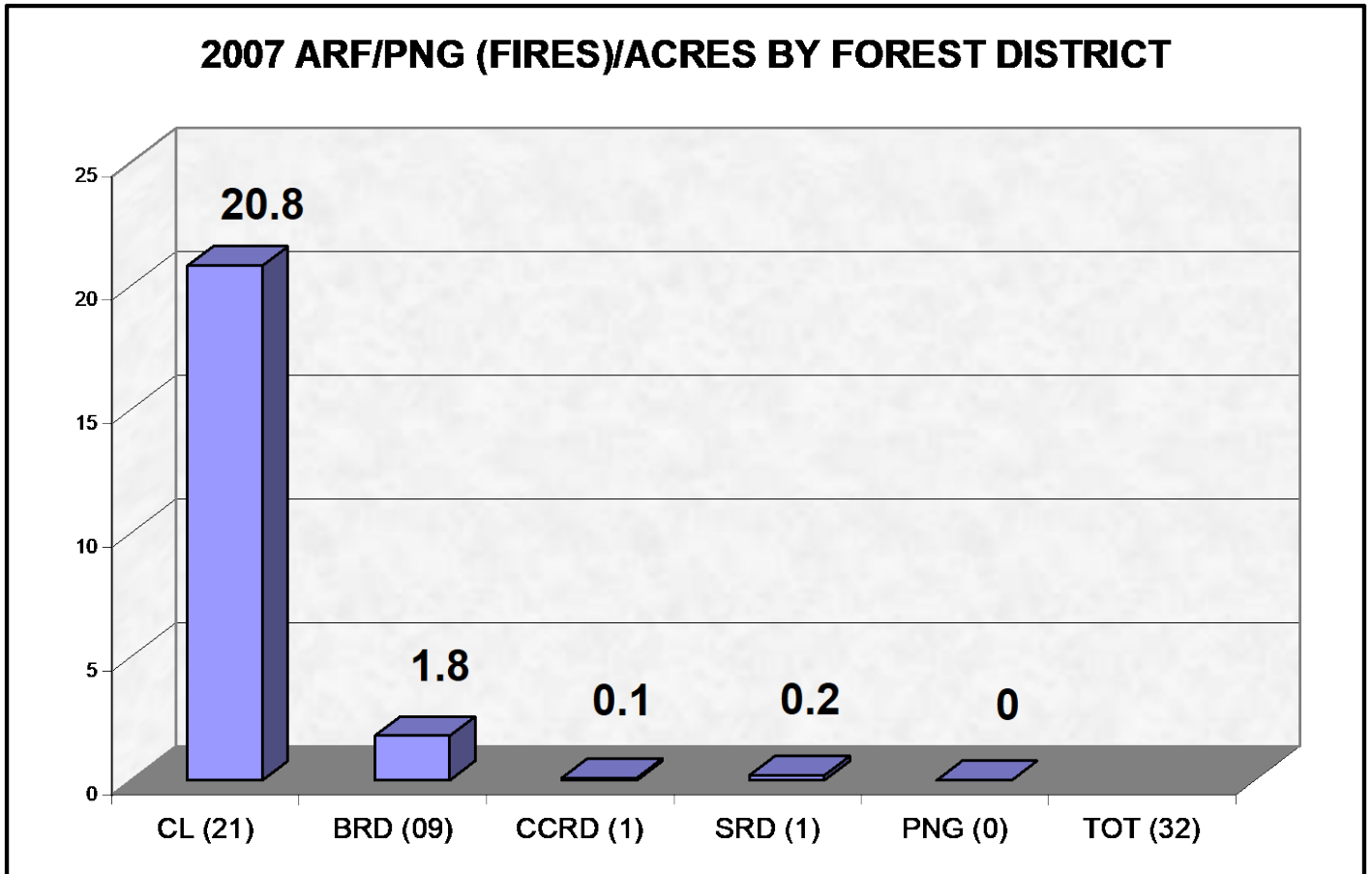


ARF-PNG ACRES BURNED/YEAR 1960-2006

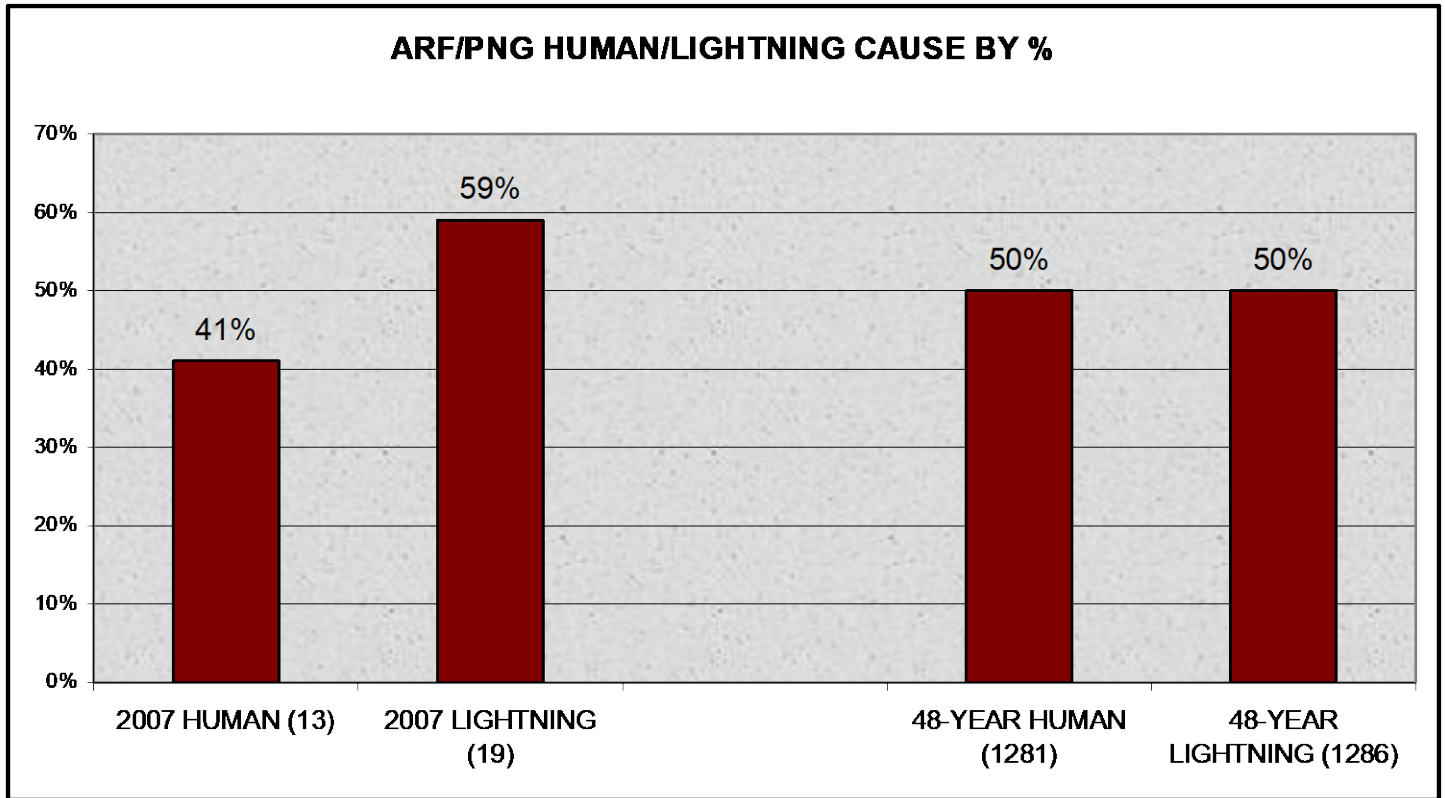


The following chart shows the 2007 distribution of (fires) and acres burned by ARNF/PNG district.

2007 ARF/PNG (FIRES)/ACRES BY FOREST DISTRICT

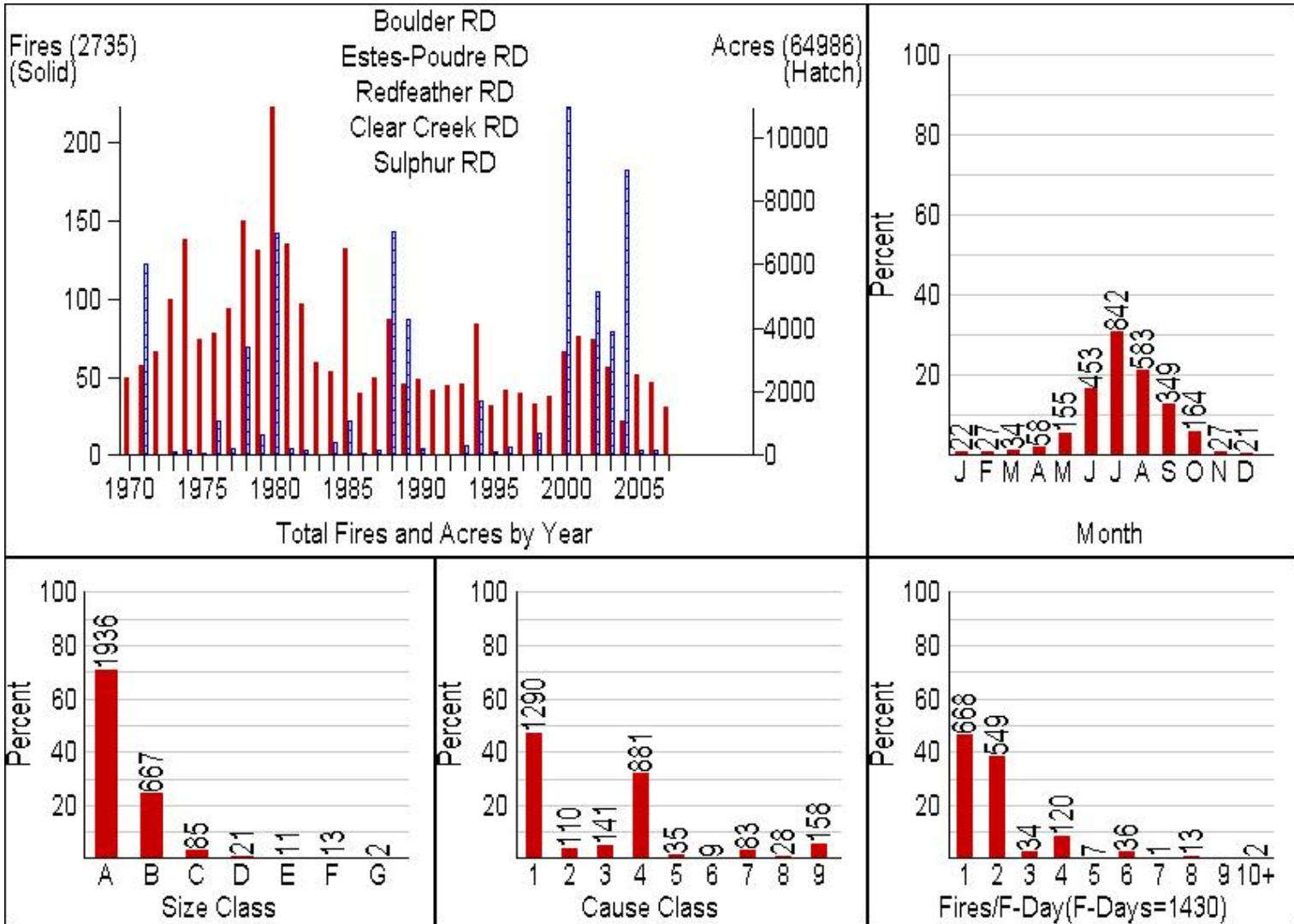


The following chart shows ARNF/PNG fire cause (Human Vs Lightning)
For 2007 compared to 48-year average.



The follow series of charts are a compilation of fire records from 1970 to 2007:
 (Does not include Pawnee National Grassland fires)

- The first chart shows fires and acres burned each year (*Includes Non-forest Service acres*).
- Fire occurrence by month (Fire Season).
- Fires by size class: (A: 0-.25) (B: .25-10) (C: 10-100) (D: 100-300) (E: 300-1,000) (F: 1,000-5,000) (G: 5,000+)
- Fires by cause: (1=Lightning) (2=Equipment) (3=Smoking) (4=Campfire) (5=Debris) (6=Railroad) (7=Arson) (8=Children) (9=Miscellaneous)
- Fires per day.

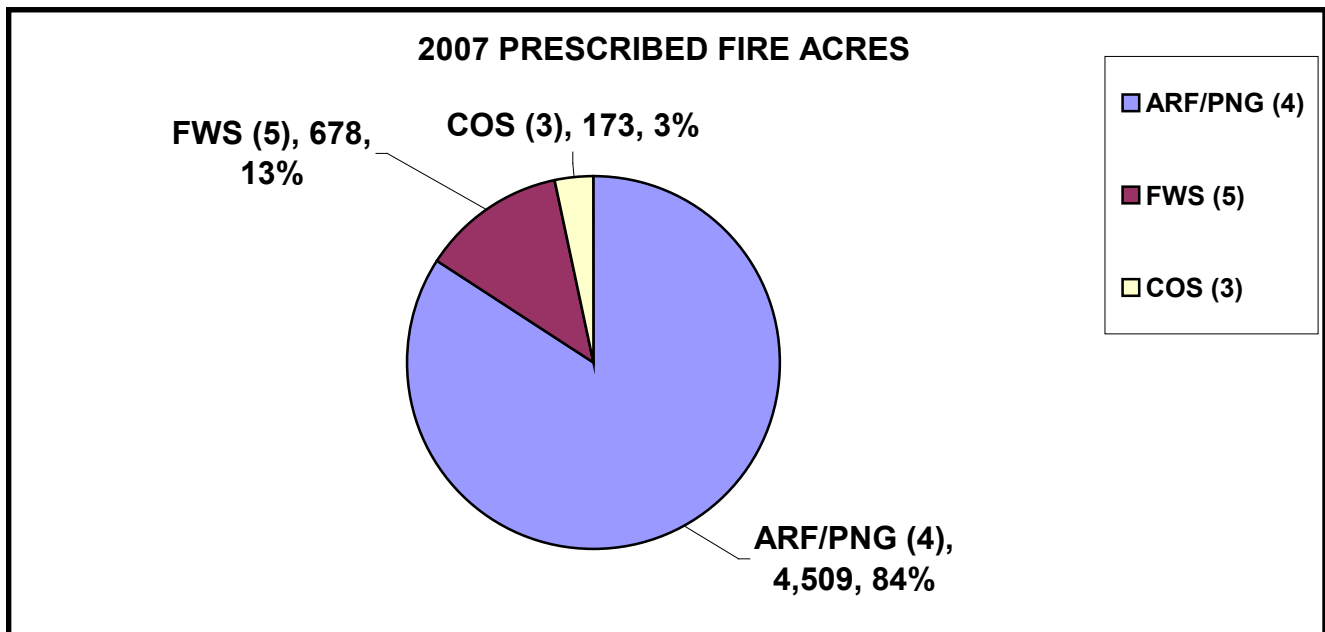


ARF/PNG LARGE FIRE HISTORY 1960-2006 (300+ ACRES GRASS/100+ ACRES TIMBER):

YEAR	UNIT	FIRE NAME	ACRES	H/L	YEAR	UNIT	FIRE NAME	ACRES	H/L
1960	PNG	RENO	606	H	1988	RFRD	SWAN	200	L
1960	PNG	TOEDTLI	660	L	1988	BRD	BLACKTIGER	1,804	H
1962	CCRD	REST HOUSE	1,007	H	1989	RFRD	MOBERLY	364	L
1962	RFRD	ROACH	748	H	1989	RFRD	LIVERMORE	1,967	L
1962	EPRD	PALISADE	140	H	1989	RFRD	EATON RES.	100	H
1966	EPRD	COMANCHE	470	H	1989	PNG	HORSETAIL	1,283	H
1968	CCRD	LINCOLN	740	L	1989	RFRD	GOODELL	141	L
1971	RFRD	BULL MTN.	2,635	H	1990	EPRD	SNOWTOP	275	L
1971	RFRD	LOOKOUT	124	L	1993	EPRD	HOURLASS	1,221	L
1971	RFRD	SKYLINE	210	H	1994	EPRD	EGGERS	370	L
1976	BRD	COMFORTER	256	H	1994	EPRD	CRYSTAL	370	L
1976	RFRD	ANSEL #2	250	H	1996	RFRD	GREYROCK	130	H
1978	CCRD	RESERVOIR	400	H	1998	CCRD	BEAR TRACK	477	H
1978	RFRD	KILLPECKER	1,200	H	1998	CLRD	BOBCAT GULCH	10,599	H
1979	EPRD	PIERSON PARK	312	H	2000	PNG	SPRING	1,268	H
1980	SRD	M.SUPPLY CK.	477	H	2001	CLRD	PREVENT	190	H
1980	RFRD	BEARTRAP	2,734	H	2002	CLRD	HEWLETT GULCH	500	H
1980	EPRD	YOUNG GULCH	180	H	2002	CLRD	BIG ELK	4,348	H
1980	PNG	KLINGENSMITH	1,000	L	2002	BRD	OVERLAND	3,400	H
1985	RFRD	GREYROCK	235	L	2003	CLRD	PICNIC ROCK	8,908	H
1985	PNG	McGREW	310	L	2004	PNG	KLINGENSMITH	850	H
1988	RFRD	GRACE CK.	2,800	H	2005		None		
1988	BRD	BEAVER LK.	757	H	2006		None		
	BRD	CANYON	2,471	H	2007		None		

2007 PRESCRIBED FIRE ACCOMPLISHMENTS:

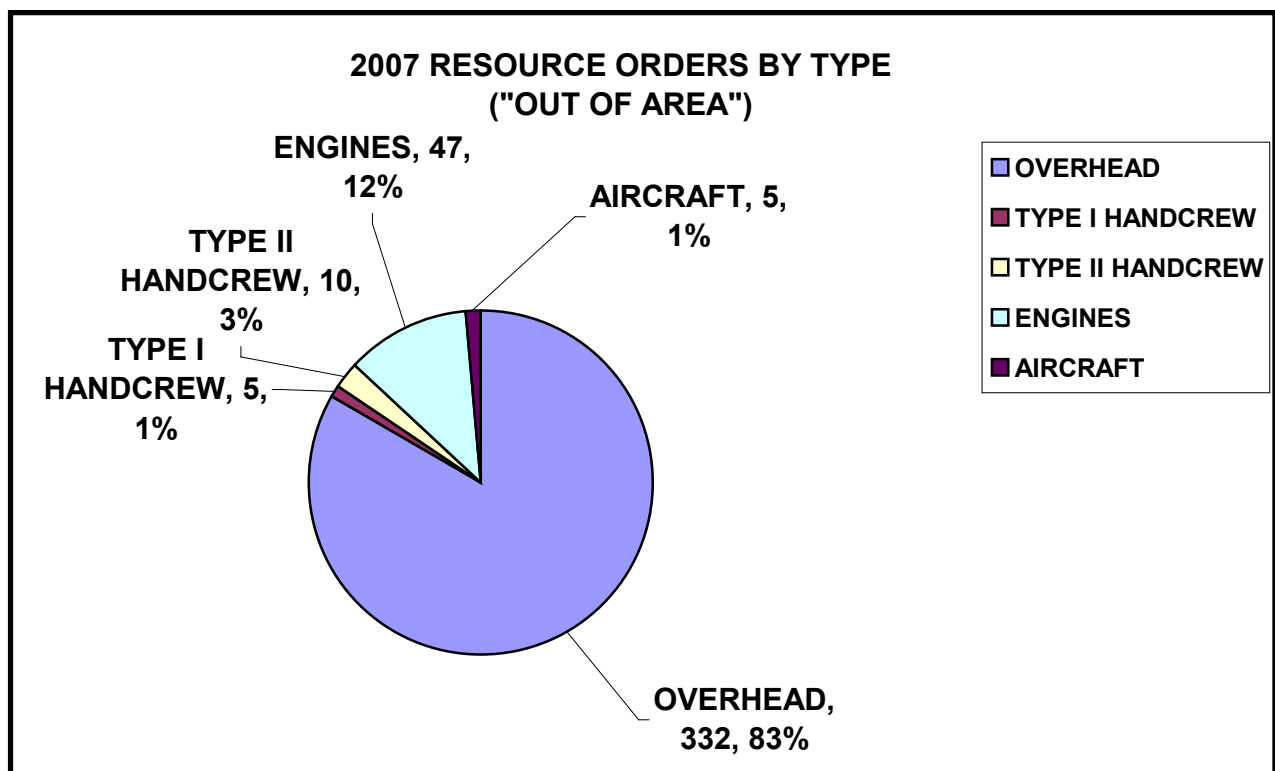
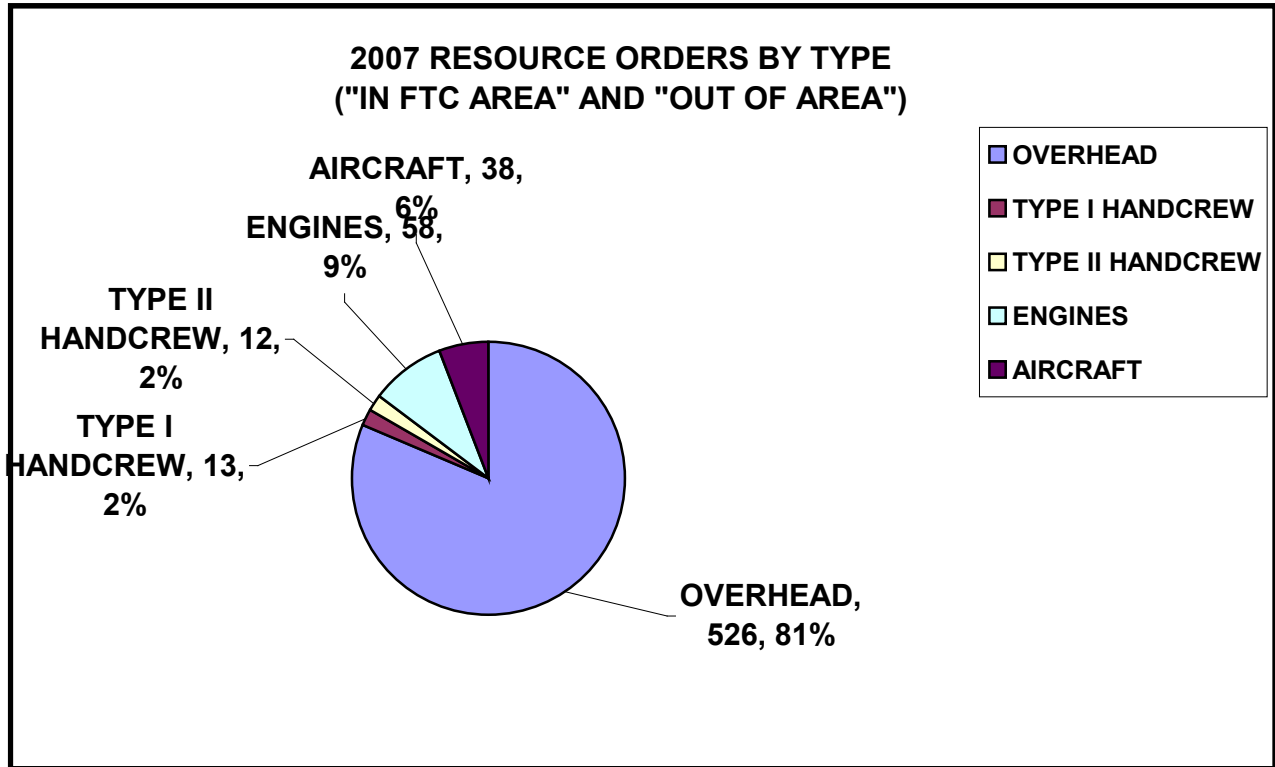
These were the numbers for prescribed burns currently available as of 12/31/07 for all the agencies. The Arapaho-Roosevelt National Forests and Pawnee National Grassland worked on 4 projects for a total acreage of 4,509 acres. The Rocky Mountain Arsenal Wildlife Refuge RX burns included 5 projects for approximately 678 acres.



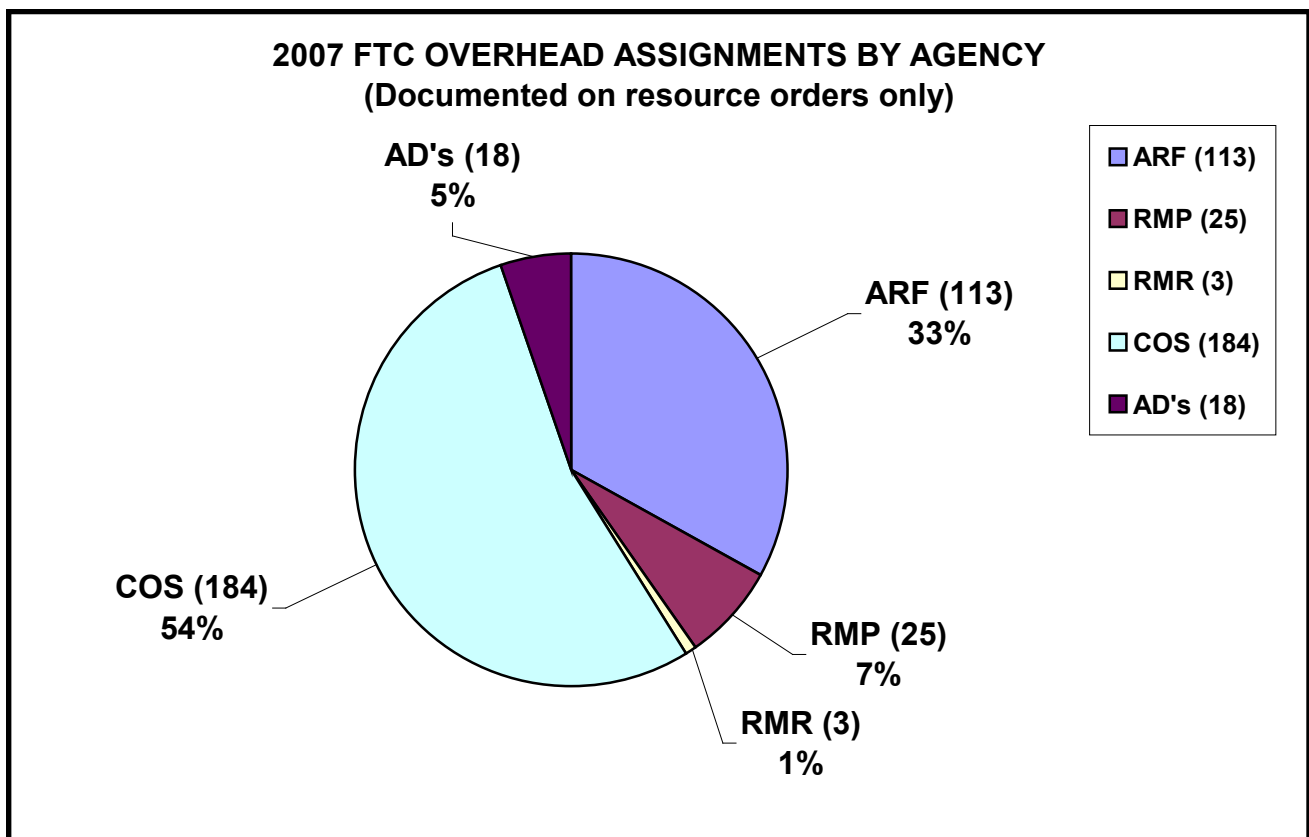
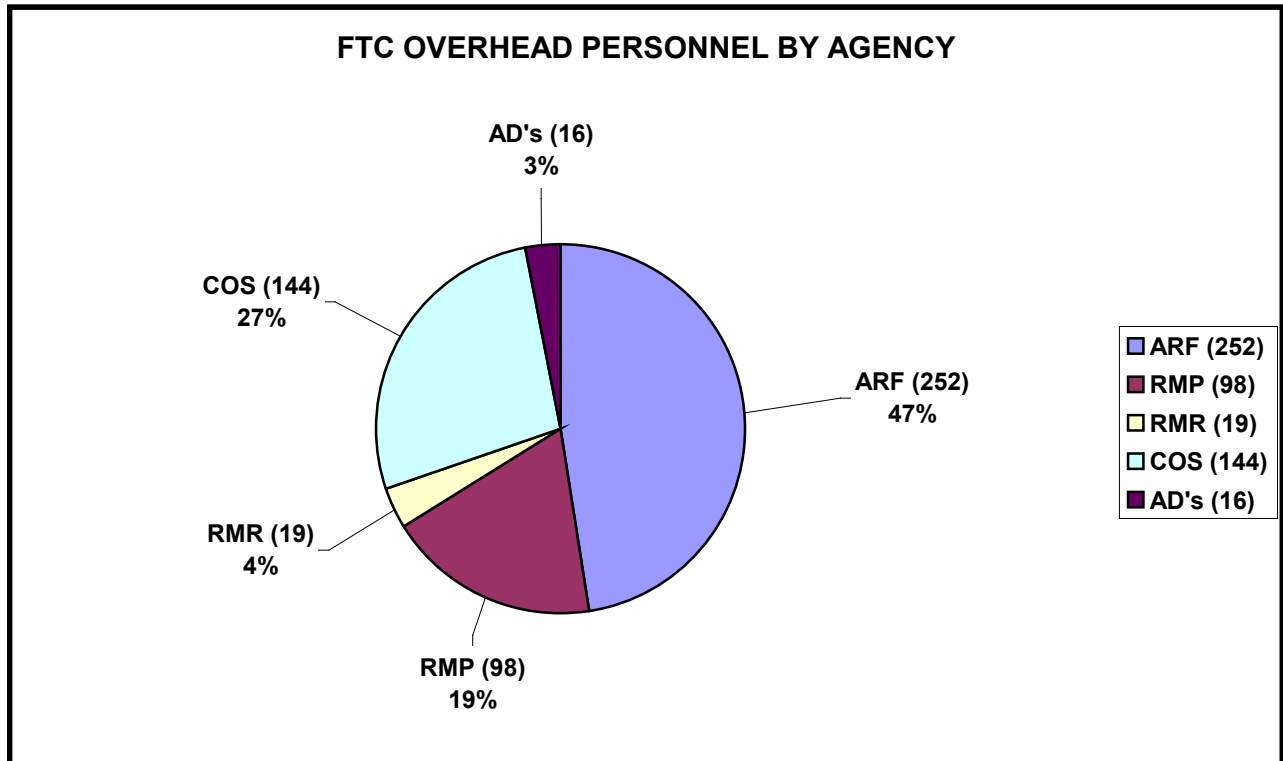
2007 FORT COLLINS INTERAGENCY DISPATCH CENTER AND AVIATION SERVICE CENTER REPORT:

FTC processed a total of 647 resource orders. This includes all resource orders for “in-area” and “out-of-area” assignments. *This does not include many resources that were not ordered through official channels (Local I.A.), nor does it include de-mob and reassignment orders for out-of-area resources brought into the area for project fire support.*

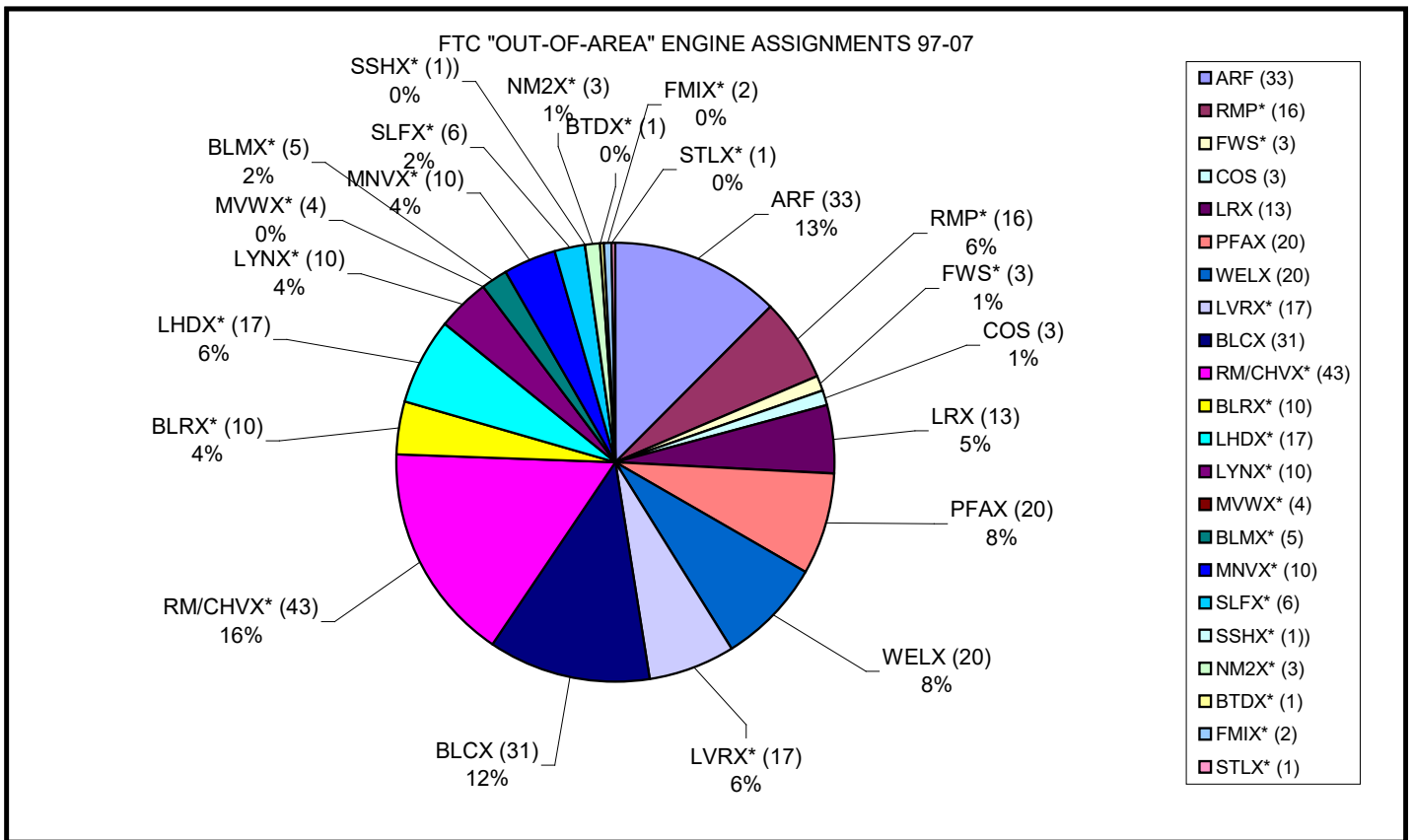
The breakdown of resource assignments by type is shown in the following chart.



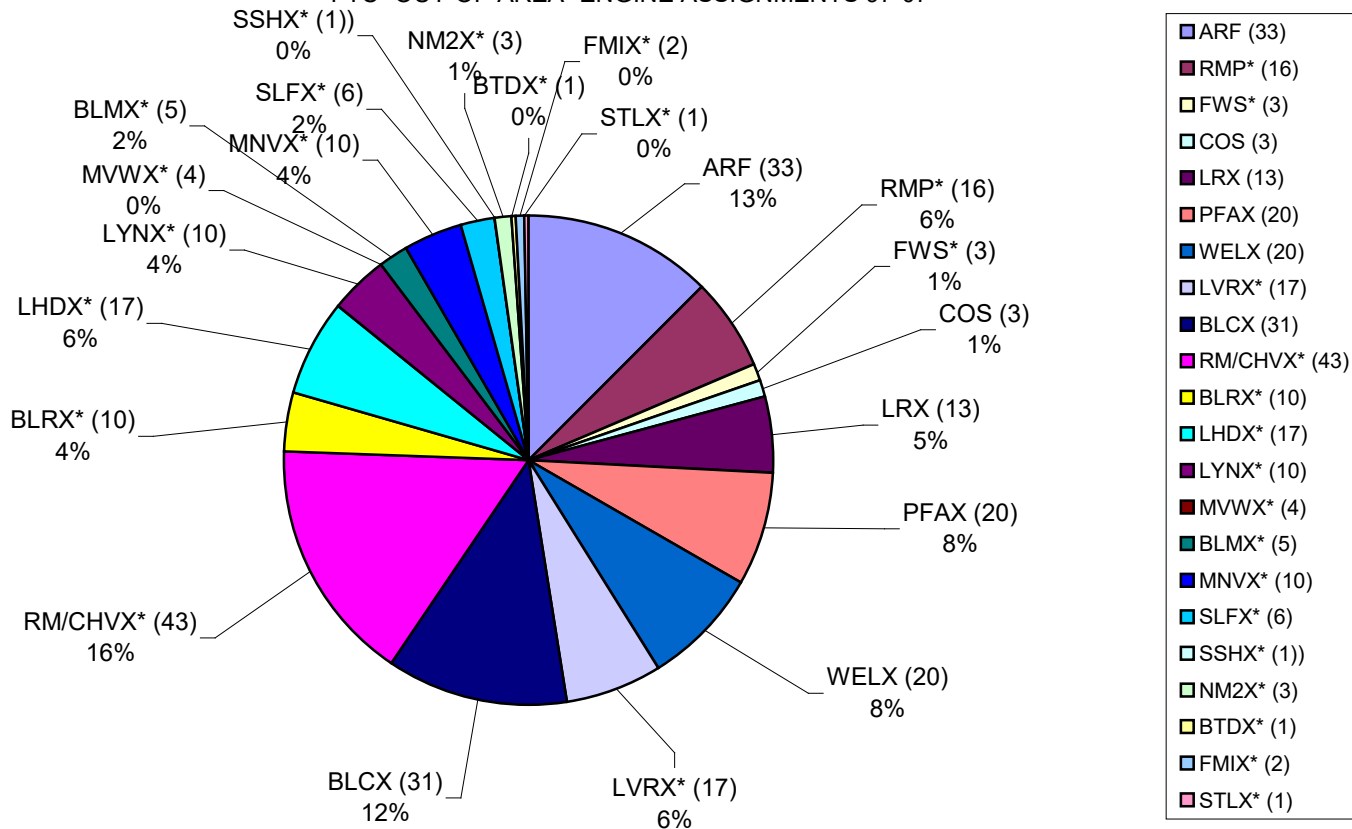
The chart below shows the number of personnel assigned to incidents from each agency for 2007. The number in () is the number of Overhead assignments the agency filled. The percentage of the total number of filled Overhead assignments is also denoted. Example: The Arapaho-Roosevelt N.F./Pawnee N.G. have 47% of the total number of Overhead personnel (chart #1) and filled 33% of the Overhead resource orders (chart #2). These numbers are influenced by the amount of commitment required on the home unit due to fire severity.



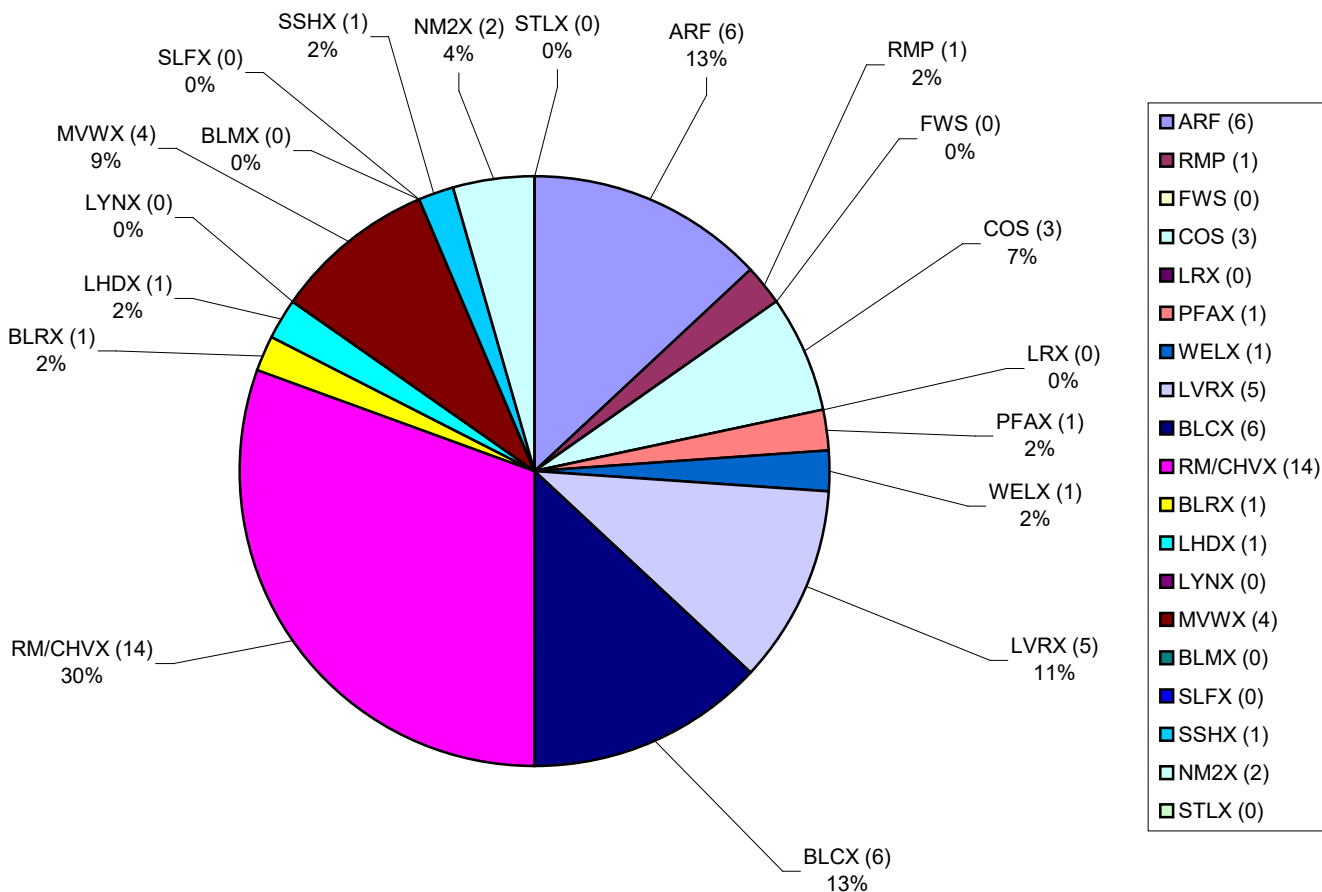
There were a total of 17 out-of-area wildfire incident engine assignments filled. There have been 263 total assignments from 1997 through 2007 (ten years). This does not include Severity, Pre-Suppression, or agency specific requests. The average annual number of engine assignments is 23 orders per year.



FTC "OUT-OF-AREA" ENGINE ASSIGNMENTS 97-07



2007 FTC "OUT OF AREA" ENGINE ASSIGMENTS

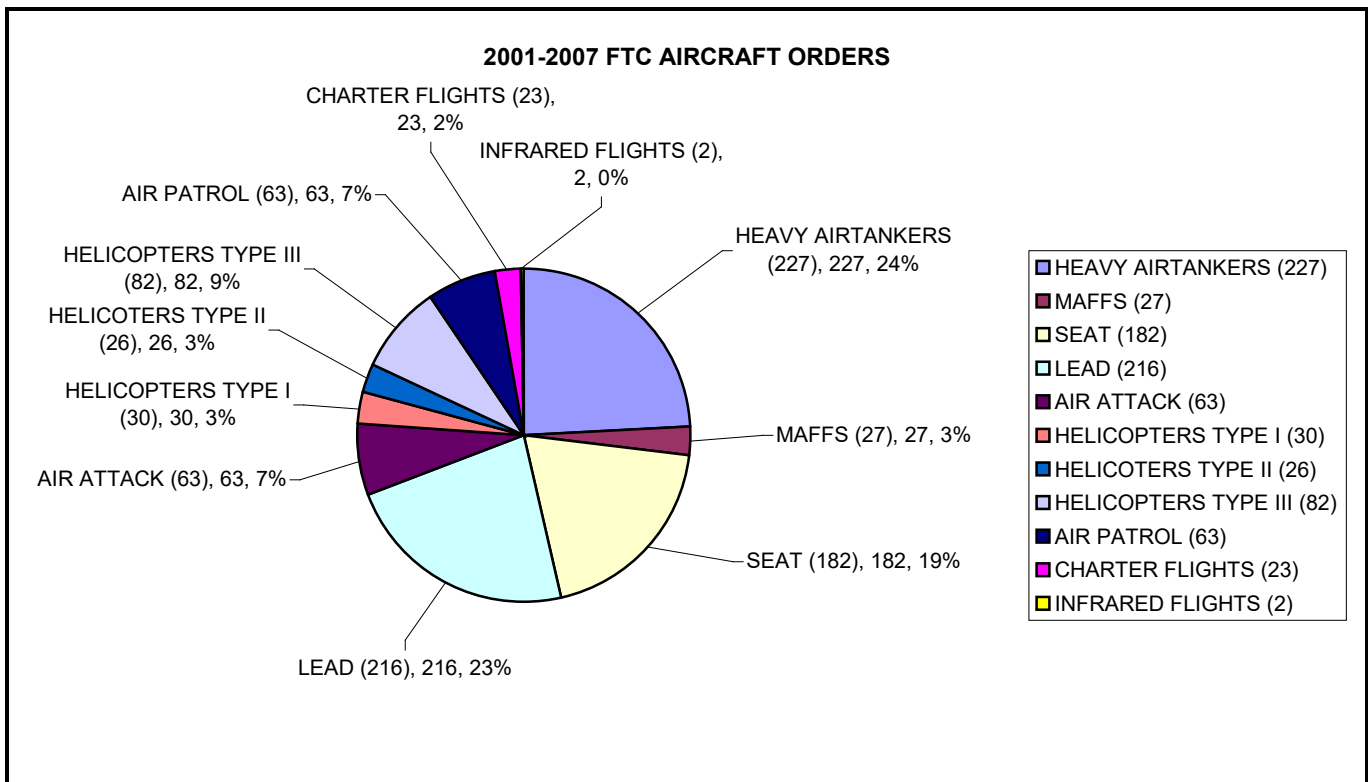
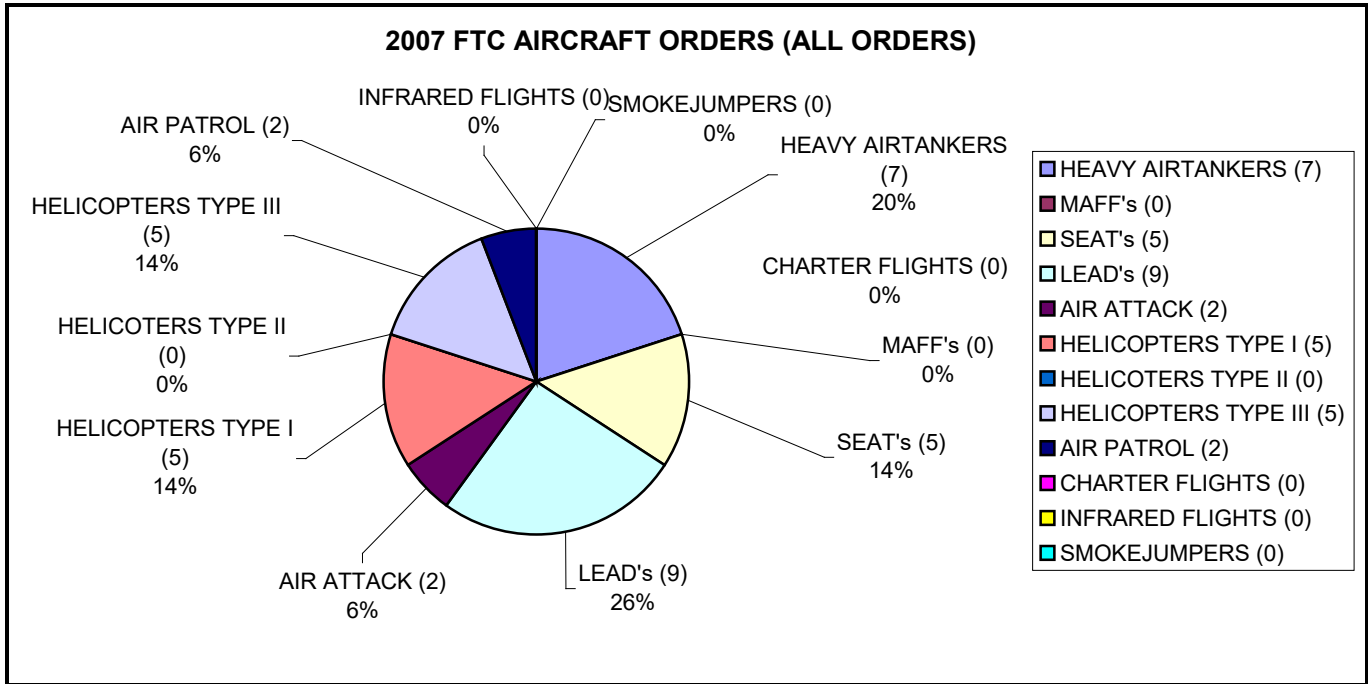


*Units that have not participated in the engine program for all ten years.

AVIATION:

FTC processed 38 aircraft orders during the 2007 fire season. See chart below for breakdown of orders and aviation resource types.

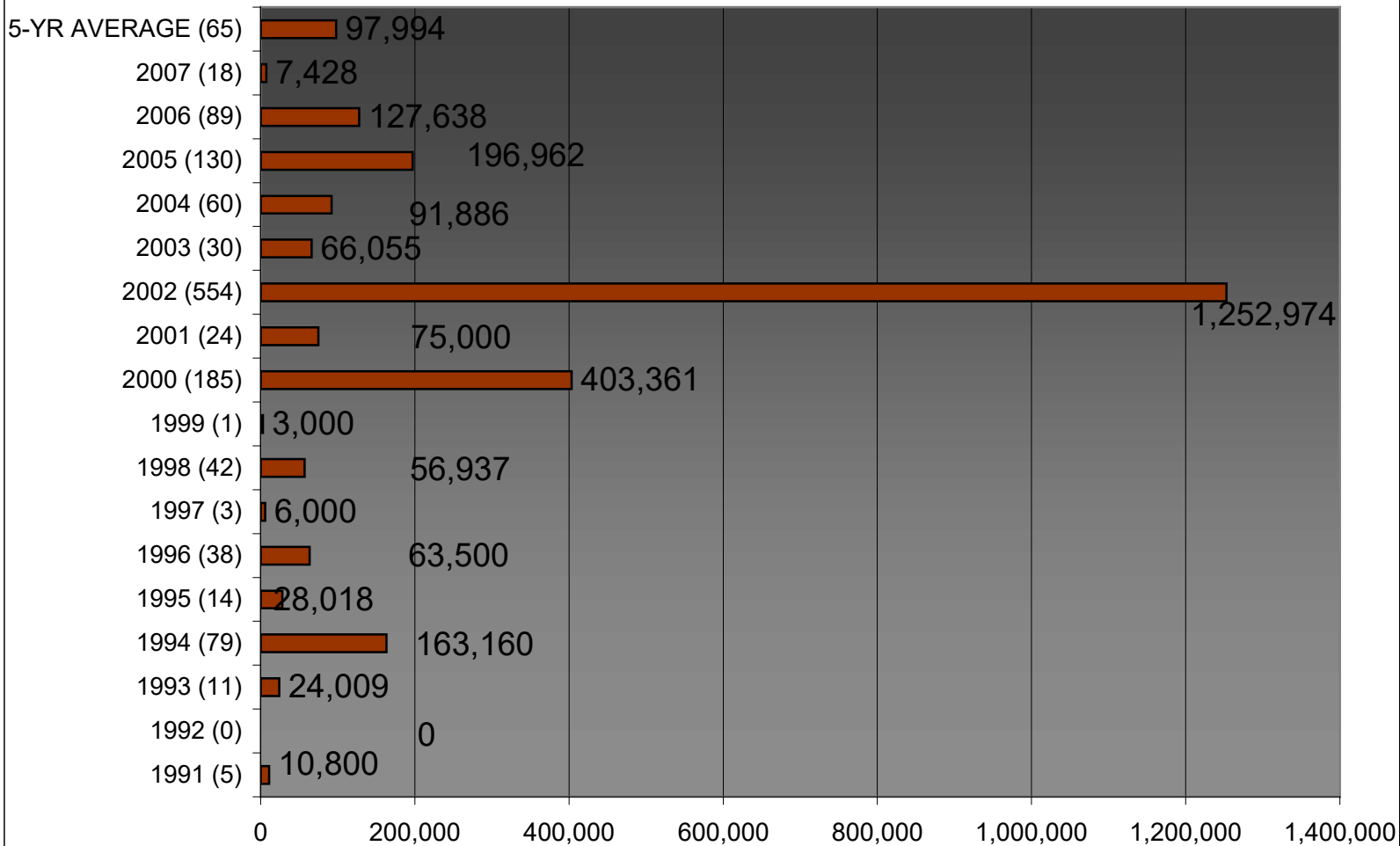
The Redfeather Helicopter was not assigned to the ARF this year. The Boulder County Helicopter program was terminated in 2004.



Airtanker Base

There were 18 missions flown, delivering 7,428 gallons of retardant, from the Jeffco Airtanker Base in the 2007 fire season. The 5 five year average annual numbers for the Jeffco Airtanker base are 65 missions flown per year and 97,994 gallons of retardant delivered per year.

1991-2007 JEFFCO AIRTANKER BASE (MISSIONS FLOWN) & GALLONS OF RETARDANT DELIVERED



Key to Legend Mnemonics:

ARF	Arapaho-Roosevelt/Pawnee
RMP	Rocky Mountain National Park
RMR	Rocky Mountain Arsenal National Wildlife Refuge
COS	Colorado State Forest Service
LRX	Larimer County Sheriff's Department
BLX	Boulder County Sheriff's Department
PFAX	Poudre Fire Authority
WELX	Wellington Fire Dept.
LVRX	Loveland Rural Fire Dept.
BLCX	Boulder City Fire Dept.
RM/CHVX	RockyMtn/Cherryvale Fire Dept.
BLRX	Boulder Rural Fire Dept.
LHDX	Lefthand Fire Dept.
LYNX	Lyon's Fire Dept.
MVWX	MountainView Fire Dept.
BLMX	Boulder Mountain Fire Dept.
SLFX	Sugarloaf Fire Dept.
NM2X	North Metro Fire Dept.
STLX	Sterling Fire Dept.

2008 EMPHASIS AREAS FOR FTC:

- Continue to review and improve dispatch operations.
- Continue with integrating with Colorado State Office of Emergency Management Dispatch Operation.
- Continue working with all agencies on Radio Issues, frequencies, etc.
- Continue to pursue “Fair Share” funding with state cooperators. (May change with future of State OEM) dispatch operations.
- Continue to deal with Dispatch Reviews.